

SCÉCSÉNY MUNICIPAL WWTP

Hungary

| | |
|---------------------------|---|
| SIZE OF WWTP | 2000 m ³ /day (528 300 GPD) |
| END USER | Northern Hungary regional water and wastewater utility provider, ÉRV Zrt. |
| CUSTOMER | INWATECH Kft. |
| START OF OPERATION | December, 2014 |

ISSUE

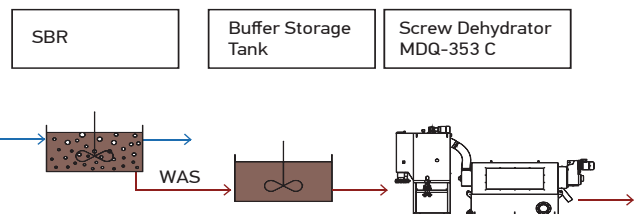
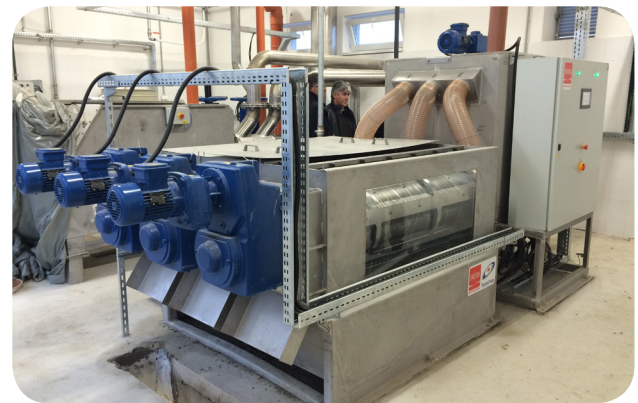
The client had frequent maintenance issues with their belt-filter press, therefore they decided to change it during the general reconstruction of WWTP. However, no belt-filter press manufacturer could guarantee more than 18 % DS content of sludge cake.

SOLUTION

EKOTON performed on-site pilot tests with a small MDQ model and achieved 18.5-20 % cake DS content. The client was satisfied with the results and decided to purchase our equipment. Based on the required dewatering capacity, one unit of MDQ-353 C was installed. Previously installed belt-filter press is stored as a metal scrap in the territory of WWTP.

RESULTS

| | |
|-------------------------------------|--|
| TYPE OF SLUDGE | Waste activated sludge from SBR |
| UNIT SLUDGE SUPPLY | 12-18 m ³ /h (53-80 GPM) 210-230 kg DS/h (463-507 lb DS/h) |
| FEED SLUDGE DS CONCENTRATION | 1-2 % |
| CAKE DS CONCENTRATION | 18-22 % |
| OPERATION TIME | 10 h/d |
| AVERAGE POLYMER DOSE | 4-6 g/kg DS (8-12 lb/ton DS) |
| UNIT DAILY POWER CONSUMPTION | 25 kW*h |



END USER'S COMMENT

Since the commissioning, the performance of EKOTON multi-disc screw press dehydrator MDQ-353 C has been stable and with no issues. With an average feed DS content of 1 %, the cake DS content is 18-22 % while maintaining the required filtrate quality. Control cabinet is equipped with a touch screen which enables setting operational parameters both for the dehydrator and a sludge pump. Operation of the dehydrator is fully automatic, therefore it requires no attention of an operator. Besides being almost noiseless, the performance is also reliable and faultless. Over 3-year operation period, only wash water hoses have once been replaced.